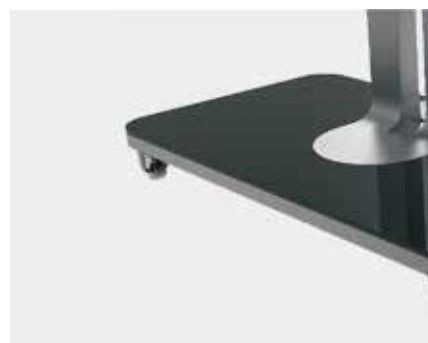




**Horion**  
SUPER INTERACTIVE FLAT PANEL



Thin body, narrow bezel  
Classical narrow bezel, 7MM depth of cushion, and  
built-in WIFI antenna, provide a wide view.



[www.vectordigitals.net](http://www.vectordigitals.net)

**Highlights**



**Bluetooth**

Connect mobile phone or iPad to the interactive flat panel via Bluetooth for wireless data transmission.



**Lock screen**

One tap to enter the screen standby mode, and the lock screen password can be set for safety reasons; and another tap to wake up the screen. Suitable for the coffee break or pause during a meeting.



**Timer**

Record the duration of the meeting. The APP can be moved anywhere on the screen, and participants can always keep track of the time.



**Connect the printer**

Connect the printer to the interactive flat panel to print and distribute paper documents during the meeting.



**WPS**

WPS can open multi-format files, like PPT, PDF, etc., support multi-language, and can be annotated in any channel.



**Voting result display of vote kit**

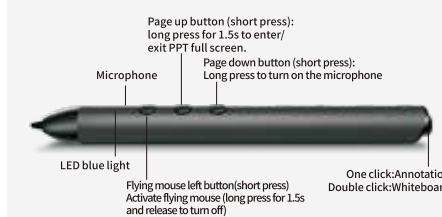
Choose the Vote & Score mode. Participants can vote anonymously to ensure that the voting is fair and equitable; then it will generate a column chart automatically to present the results.



**Accessories (optional)**

**NEW SMART PEN**

Three-key design Easy to use



**CAMERA**

Applicable to corporate video conferencing, compatible with Windows, Mac, Android, Linux systems, support most video conferencing software.

12 megapixel lens  
2x electronic zoom  
118 degree wide angle  
USB port, no driver needed  
12 megapixel lens  
2x electronic zoom  
118 degree wide angle  
USB port, no driver needed.



**MICROPHONE**

Intelligent noise reduction to enhance the sound; 360-degree sound acquisition within 8m, suitable for most conference rooms; 2600mh lithium battery, up to one month long standby; suitable for audio, video conferences.



**SCREEN MIRRORING DEVICE**

It wirelessly transfers files such as PPT, Word, Excel on the laptop to the interactive flat panel.



**MOBILE STAND**

Strong and stable, easy to move



**OPS COMPUTER**

Intel Core i5 7th generation CPU, 64-bit, integrated Intel display core, can run large complex software.



**M3A SERIES PRODUCT PARAMETERS**

Model	55M3A	65M3A	75M3A	86M3A	98M3A
Dimension	55"	65"	75"	86"	98"
Display					
Backlight Type	D-LED	D-LED	D-LED	D-LED	D-LED
Resolution	3840*2160 (UHD)	3840*2160 (UHD)	3840*2160 (UHD)	3840*2160 (UHD)	3840*2160 (UHD)
Brightness	350cd/m <sup>2</sup>	450cd/m <sup>2</sup>	450cd/m <sup>2</sup>	400cd/m <sup>2</sup>	500cd/m <sup>2</sup>
Contrast Ratio	1300:1	1300:1	1200:1	1200:1	1300:1
Response Time	6ms	6ms	8ms	8ms	8ms
Pixel Pitch	0.420mm*0.315mm	0.496mm*0.372mm	0.429mm*0.429mm	0.4935mm*0.4935mm	0.5622mm*1214.352mm
Refreshing Frequency	60Hz	60Hz	60Hz	60Hz	120Hz
Viewing Angle	178°(H) / 178°(V)	178°(H) / 178°(V)	178°(H) / 178°(V)	178°(H) / 178°(V)	178°(H) / 178°(V)
Saturation(% NTSC)	65%	65%	65%	65%	65%
Visible Area	1209.6mm*680.4mm	1428.48mm*803.52mm	1649.66mm*927.94mm	1895.04mm*1065.96mm	2158.848mm*1214.352mm
Chromaticity	1.07B(10bit)	1.07B(10bit)	1.07B(10bit)	1.07B(10bit)	1.07B(10bit)
Life Time	30,000 hrs	30,000 hrs	30,000 hrs	30,000 hrs	30,000 hrs
System Properties					
CPU Architecture	ARM A73+A53	ARM A73+A53	ARM A73+A53	ARM A73+A53	ARM A73+A53
CPU Working Frequency	1.5GHz	1.5GHz	1.5GHz	1.5GHz	1.5GHz
CPU Core	Quad Core	Quad Core	Quad Core	Quad Core	Quad Core
GPU	Mali-G51	Mali-G51	Mali-G51	Mali-G51	Mali-G51
RAM	3GB	3GB	3GB	3GB	3GB
ROM	32GB	32GB	32GB	32GB	32GB
Power					
Voltage	100 V ~ 240 V/AC, 50/60 Hz	100 V ~ 240 V/AC, 50/60 Hz	100 V ~ 240 V/AC, 50/60 Hz	100 V ~ 240 V/AC, 50/60 Hz	100 V ~ 240 V/AC, 50/60 Hz
Maximum Power (Without Ops)	140W	170W	400W	440W	480W
Standby Power	<0.5W	<0.5W	<0.5W	<0.5W	<0.5W
AC Input	+1	+1	+1	+1	+1
Interface + Speaker	HDMI IN: *2; DP IN (Optional) : *1; VGA IN: *1; OPS Interface: *1; LAN Port: *2; Android USB: *2; Public USB: *2; Touch-USB: *1; PC-Audio OUT: *1; HDMI OUT: *1; S/PDIF OUT: *1; Audio OUT: *1; Rs232: *1; Speaker: 2*15W				
Structure					
Net Weight	31.5Kg±1.5Kg	43.5Kg±1.5Kg	58Kg±1.5Kg	76Kg±1.5Kg	136.3Kg±1.5Kg
Gross Weight	42Kg±1.5Kg(Heavy Carton)	56Kg±1.5Kg(Heavy Carton)	78.2Kg±1.5Kg(Heavy Carton)	98Kg±1.5Kg(Heavy Carton)	187.5Kg±1.5Kg(Heavy Carton)
Product Size (L*W*H)	1304.0mm*93.5mm*774.8mm	1511.95mm*98.6mm*887mm	1741.7mm*103.4mm*1020.2mm	1995.2mm*111.9mm*1166.3mm	2242mm*117mm*1298mm
Package Size (L*W*H)	1420mm*245mm*910mm	1660mm*245mm*1045mm	1880mm*280mm*1160mm	2140mm*280mm*1340mm	2525mm*435mm*1750mm
Vesa	4-M6 Screw Hole 400mm*400mm	4-M8 Screw Hole 600mm*400mm	4-M8 Screw Hole 600mm*400mm	4-M8 Screw Hole 700mm*400mm	4-M6 Screw Hole 800mm*400mm
Housing Material (Front/Back)	Aluminum/Metal Plate	Aluminum/Metal Plate	Aluminum/Metal Plate	Aluminum/Metal Plate	Aluminum/Metal Plate
Housing Color (Front/Back)	Deep Gun(White)/Black	Deep Gun(White)/Black	Deep Gun(White)/Black	Deep Gun(White)/Black	Deep Gun(White)/Black
Touch System					
Touch Type	Infrare Touch Frame	Infrare Touch Frame	Infrare Touch Frame	Infrare Touch Frame	Infrare Touch Frame
Glass Type	4mm AG Tempered Glass	4mm AG Tempered Glass	4mm AG Tempered Glass	4mm AG Tempered Glass	4mm AG Tempered Glass
Respond Time	<10ms	<10ms	<10ms	<10ms	<10ms
Touch Accuracy	±1mm	±1mm	±1mm	±1mm	±1mm
Input Mode	Finger/Writing Pen	Finger/Writing Pen	Finger/Writing Pen	Finger/Writing Pen	Finger/Writing Pen
Operating System					
Support Multi Touch Control	Multi-point: Windows 7/8/10, Android, Linux; Single-point: Windows XP, Mac OS X, Chrome				

Note: The relevant specifications are for reference only. The specific parameters are subject to the actual product. The information has been carefully checked and is accurate to the best of our knowledge. The product features and function are subject to change without notice. The company reserves the right to final interpretation of the contents.